



## MAIN CHARACTERISTICS

<b>Builder</b>	Custom Line
<b>Designer</b>	Zuccon International
<b>Built Year</b>	2011
<b>Hull Material</b>	GRP
<b>Length</b>	32.62 M / 107'3"
<b>Beam</b>	7.00 M / 22'96"
<b>Draft</b>	2.37 M / 7'78"
<b>Displacement</b>	147.00 tons
<b>Lying</b>	Croatia
<b>Registry</b>	Malta
<b>Tax Status</b>	VAT PAID

**5,500,000 EUR** 6,479,127 USD\*

\* Approximate price conversion

 Address:

3 Rue de la Loge L-1945 Luxembourg

 Contact

Thomas Peltier • P: +352.27.40.99.90 • M: +352.621.326.323

 E-mail:

t.peltier@seastemia.com

## DESCRIPTION

---

This Navetta Crescendo 33 meters Tri Decks remains in an immaculate condition with haul-out and full service every year, thanks to her owner and 5 crew. This fine yacht has never been chartered and is very well been taken care of. With her tri-deck configuration and luxury Fendi interior she will be your perfect cruising partner and treat you and your guests to an unrivalled experience on board.

## SPECIFICATIONS

### BOAT DETAILS

<b>Built Year</b>	2011	<b>Lying</b>	Croatia
<b>Registry</b>	Malta	<b>Tax Status</b>	VAT PAID

### CERTIFICATION

<b>Certification</b>	RINA
----------------------	------

### BUILDER / DESIGNER

<b>Builder</b>	Custom Line	<b>Designer</b>	Zuccon International
<b>Model</b>	Crescendo 33	<b>Hull Type</b>	Semi Displacement
<b>Hull Material</b>	GRP		

### DIMENSIONS

<b>Length</b>	32.62 M / 107'3"	<b>Beam</b>	7.00 M / 22'96"
<b>Draft</b>	2.37 M / 7'78"	<b>Displacement</b>	147.00 tons

### MACHINERY

<b>Engine Maker</b>	MAN	<b>Drive</b>	Shaft
<b>Number of Engines</b>	2	<b>Propulsion Mode</b>	Diesel
<b>Engine(s) power</b>	1,400.00 hp	<b>Engine(s) model</b>	MANV121200CR
<b>Engine 1 hours</b>	4,170.00 H.	<b>Engine 2 hours</b>	4,170.00 H.
<b>Main Generator Maker</b>	Fisher Panda Overhauled	<b>Main Generator Power</b>	53.00 KW
<b>Main Generator Hours</b>	650.00 H.	<b>Auxiliary Generator Maker</b>	Fisher Panda Overhauled
<b>Auxiliary Generator Power</b>	53.00 KW	<b>Auxiliary Generator Hours</b>	650.00 H.
<b>Stabilizer Type</b>	Hydraulic Thins	<b>Stabilizer Maker</b>	ABT + 3 Gyroscopes zero speed
<b>Water Maker</b>	2X Idromar MC5	<b>Water Maker Flow</b>	500.00 l/H / 132.00 gal/H
<b>AC type</b>	Reverse Cycle AIRCO in each cabin		

### PERFORMANCES

<b>Cruising Speed</b>	12.00 knots	<b>Max Speed</b>	18.00 knots
<b>Range</b>	1,680.00 NM	<b>Cruising Speed for Range</b>	10.00 knots

## TANKAGES

<b>Fuel</b>	16,300.00 liters / 4,303.20 US gals	<b>Water</b>	3,250.00 liters / 858.00 US gals
<b>Grey Water</b>	840.00 liters / 221.76 US gals	<b>Black Water</b>	840.00 liters / 221.76 US gals

32.62 M / 107'3"





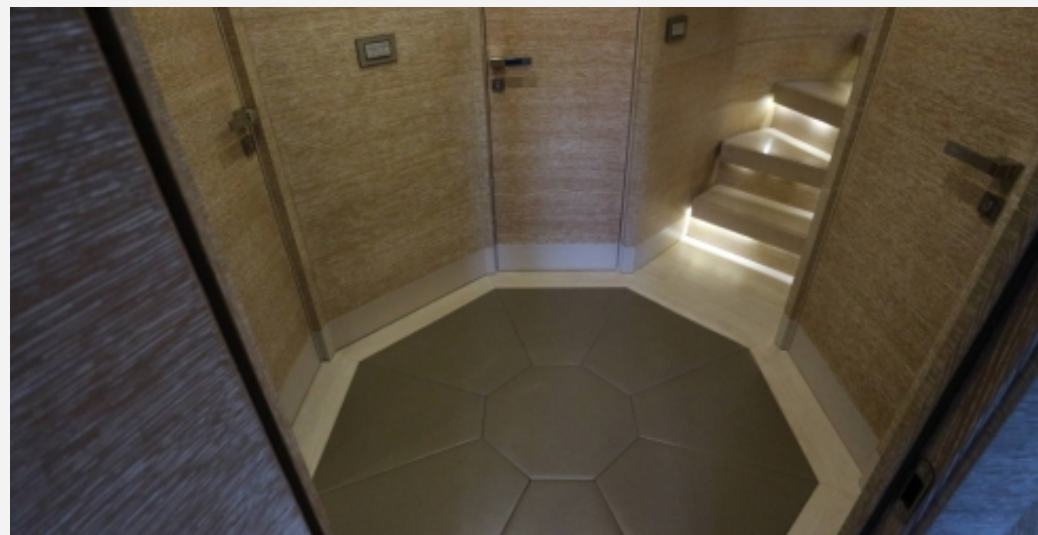
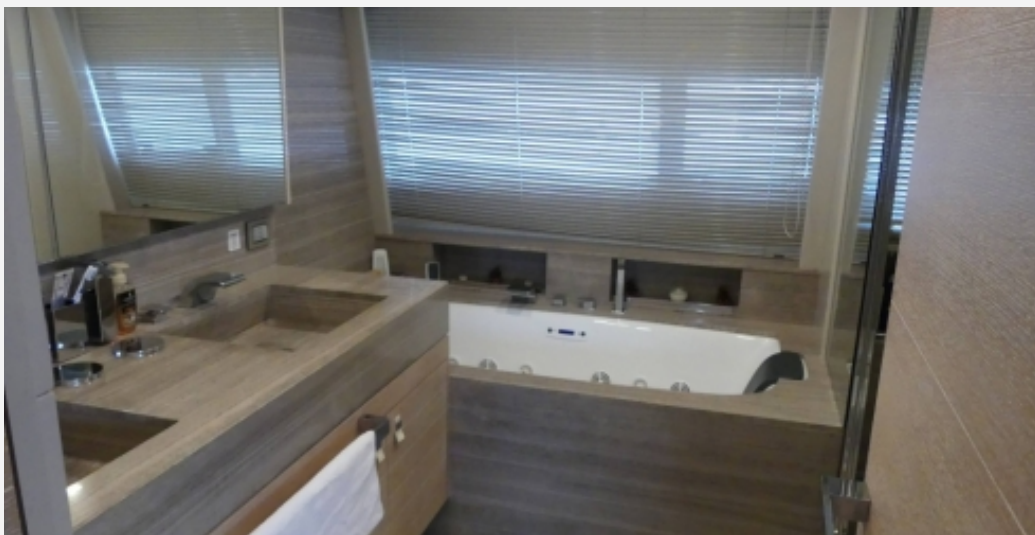
















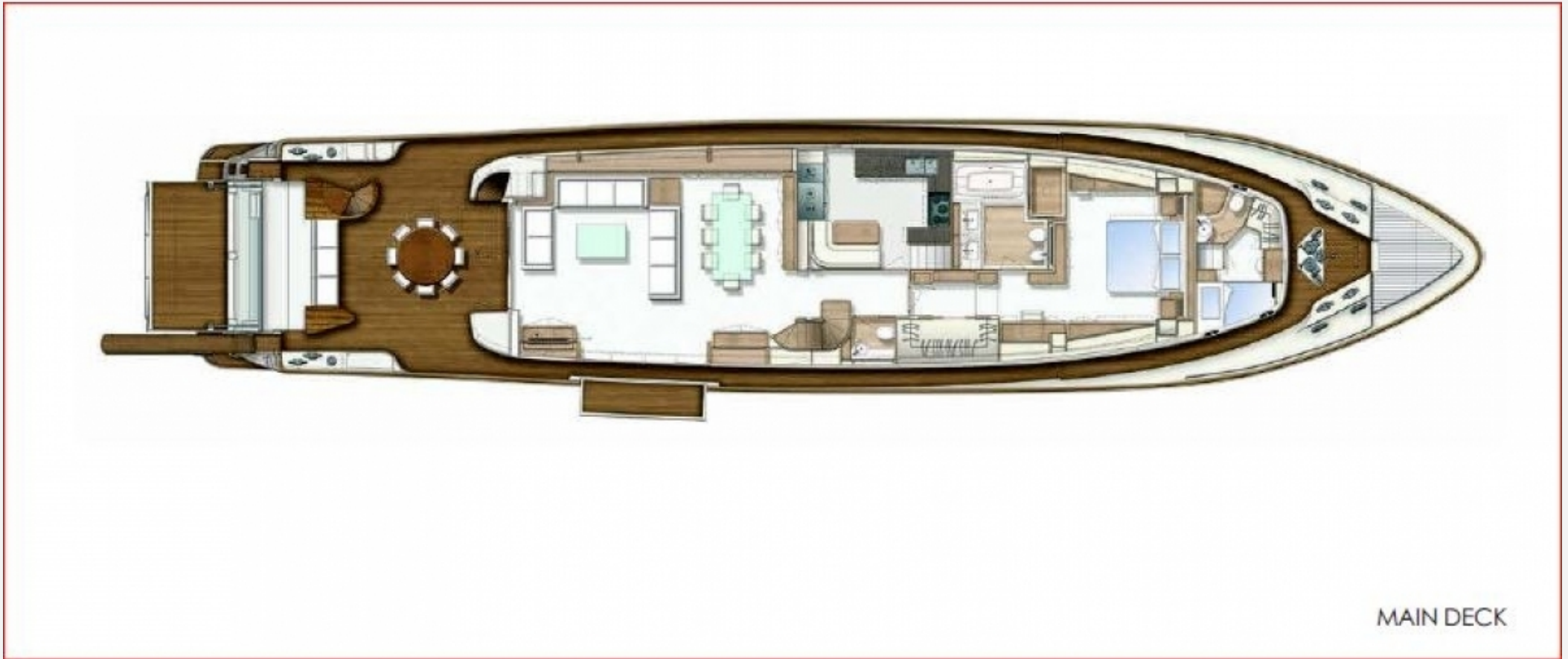


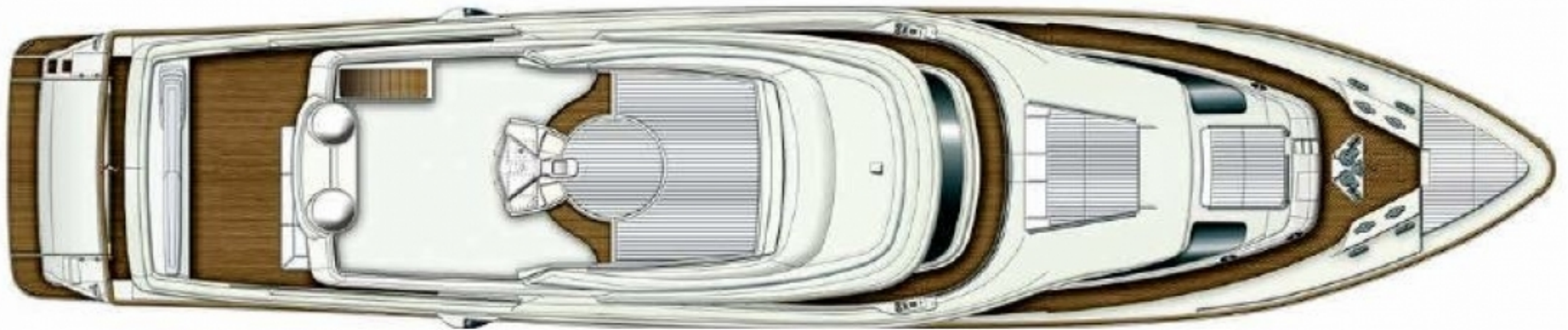
UPPER DECK



PROFILE







SUN DECK