



## CARACTÉRISTIQUES PRINCIPALES

<b>Builder</b>	Dreamline Yachts
<b>Designer</b>	T4 Design Enrico Gobbi
<b>Built Year</b>	2015
<b>Length</b>	26.30 M / 86'29"
<b>Beam</b>	6.65 M / 21'82"
<b>Draft</b>	1.90 M / 6'23"
<b>Displacement</b>	75.00 tonnes
<b>Lying</b>	Italy
<b>Registry</b>	Angleterre
<b>Tax Status</b>	excl. VAT

**4,500,000 EUR** 5,151,681 USD\*

\* Conversion approximative

🏠 Adresse:

3 Rue de la Loge L-1945 Luxembourg

📞 Contact

Thomas Peltier • P: +352.27.40.99.90 • M: +352.621.326.323

✉ E-mail:

t.peltier@seastemia.com

## SPÉCIFICATIONS

## DÉTAILS DU BATEAU

<b>Main Category</b>	Motor yacht	<b>Boat Status</b>	Brokerage
<b>Built Year</b>	2015	<b>Lying</b>	Italy
<b>Registry</b>	Angleterre	<b>Tax Status</b>	excl. VAT

## CERTIFICATION

<b>Category</b>	A	<b>Compliance</b>	CE Certification Rina pleasure
-----------------	---	-------------------	--------------------------------

## BUILDER / DESIGNER

<b>Builder</b>	Dreamline Yachts	<b>Designer</b>	T4 Design Enrico Gobbi
<b>Naval Architect</b>	Arabito Naval architect	<b>Model</b>	DL26

## DIMENSIONS

<b>Length</b>	26.30 M / 86'29"	<b>Beam</b>	6.65 M / 21'82"
<b>Draft</b>	1.90 M / 6'23"	<b>Displacement</b>	75.00 tonnes

## DIMENSIONS

<b>Ballast Weight</b>	75.00 tonnes
-----------------------	--------------

## MACHINERY

<b>Engine Maker</b>	MAN	<b>Drive</b>	V-Drive
<b>Number of Engines</b>	2	<b>Propulsion Mode</b>	Diesel
<b>Engine(s) power</b>	1,400.00 hp	<b>Engine(s) model</b>	MAN V12-1400CR
<b>Heures moteur 1</b>	885.00 H.	<b>Heures moteur 2</b>	885.00 H.
<b>Main Generator Maker</b>	Kohler	<b>Main Generator Power</b>	28.00 KW
<b>Main Generator Hours</b>	2,300.00 H.	<b>Auxiliary Generator Maker</b>	KOHLER
<b>Auxiliary Generator Power</b>	28.00 KW	<b>Auxiliary Generator Hours</b>	2,200.00 H.
<b>Stabilizer Type</b>	Electrical	<b>Stabilizer Maker</b>	Mitsubishi zero speed and navigation fins
<b>Water Maker</b>	aquamatic	<b>Water Maker Flow</b>	250.00 l/H / 66.00 gal/H
<b>AC type</b>	Tropical		

## PERFORMANCES

<b>Cruising Speed</b>	17.00 noeuds	<b>Max Speed</b>	23.00 noeuds
-----------------------	--------------	------------------	--------------

## PERFORMANCES

<b>Range</b>	1,400.00 NM	<b>Cruising Speed for Range</b>	12.00 noeuds
--------------	-------------	---------------------------------	--------------

## TANKAGES

<b>Fuel</b>	8,000.00 litres / 2,112.00 US gals	<b>Water</b>	1,400.00 litres / 369.60 US gals
<b>Grey Water</b>	710.00 litres / 187.44 US gals	<b>Black Water</b>	500.00 litres / 132.00 US gals

## ACCOMODATIONS

<b>Sleeps</b>	8 guests	<b>Courette</b>	4 simple, 2 double
<b>Bathroom</b>	4	<b>Crew</b>	5
	5		

26.30 M / 86'29"



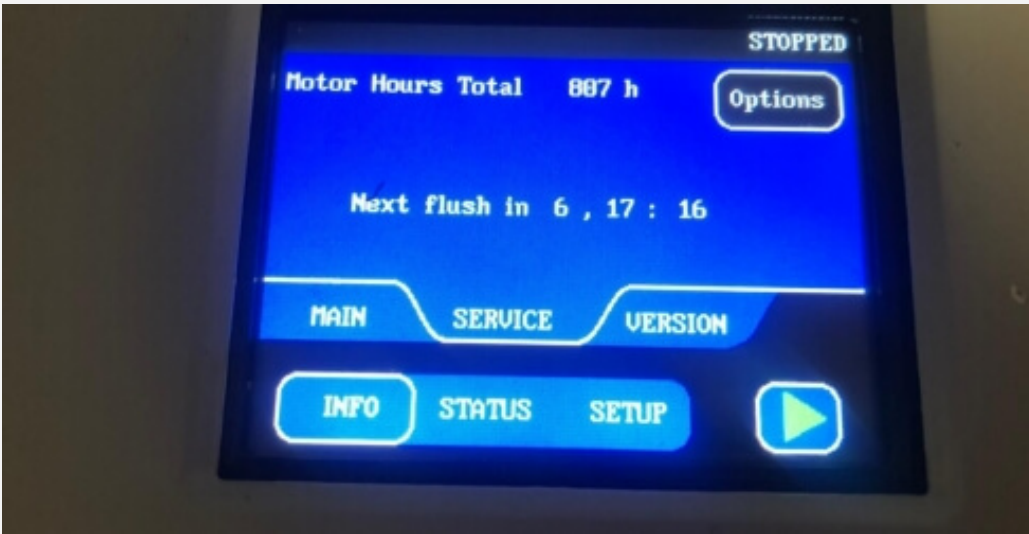


26.30 M / 86'29"

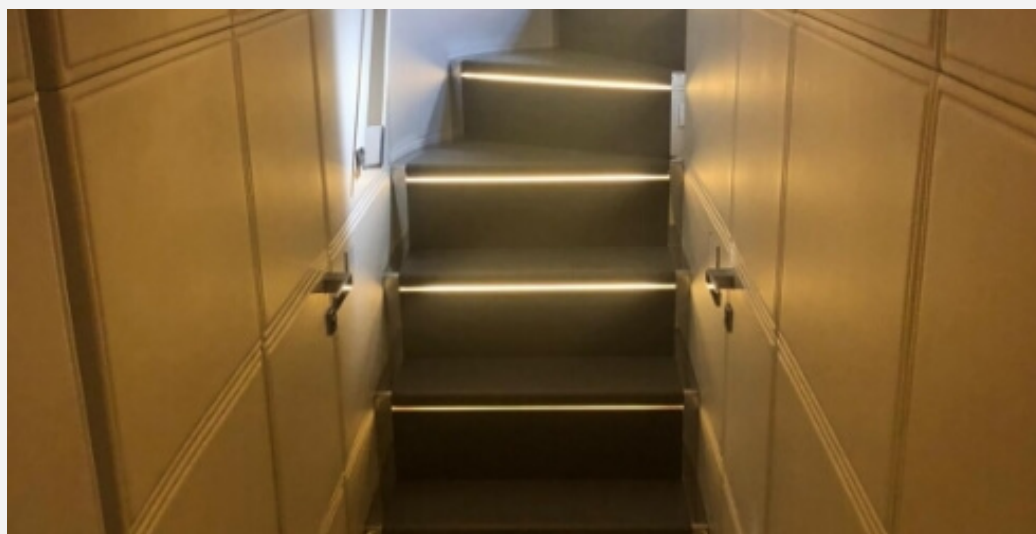




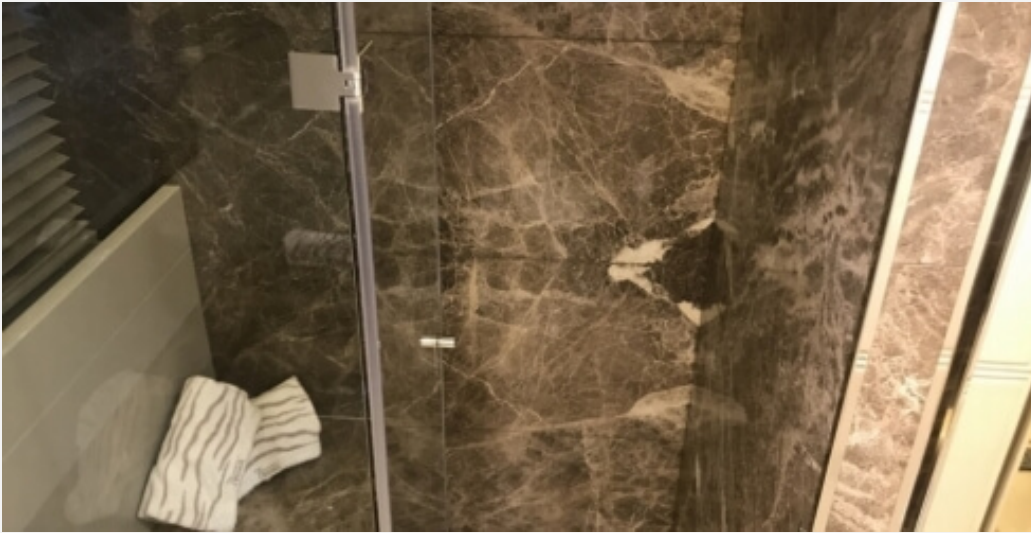
26.30 M / 86'29"



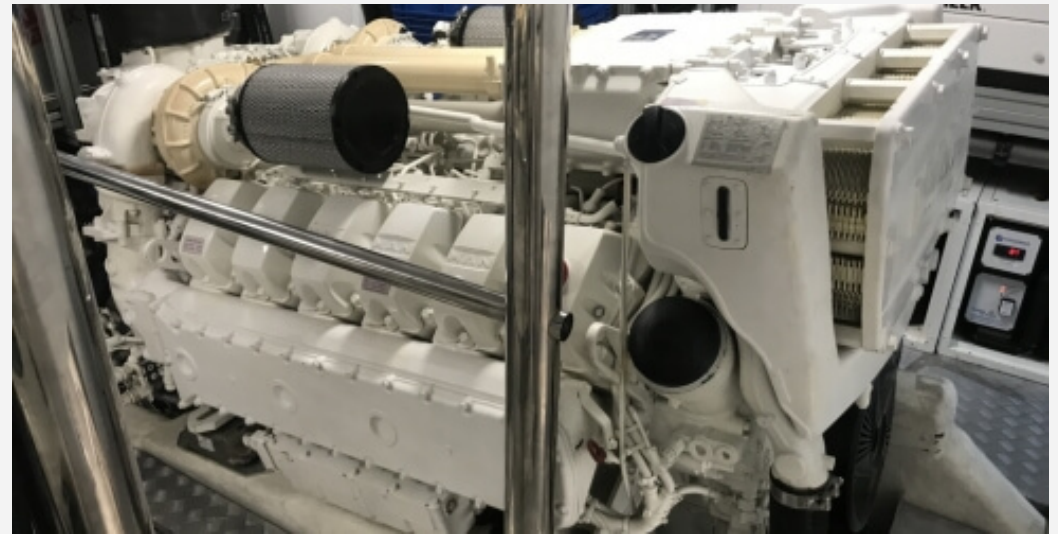
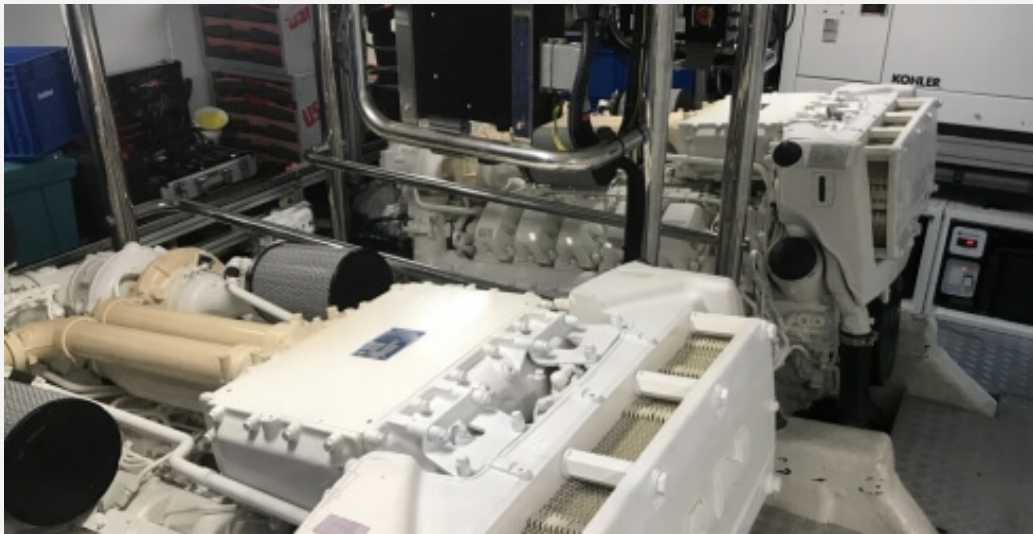






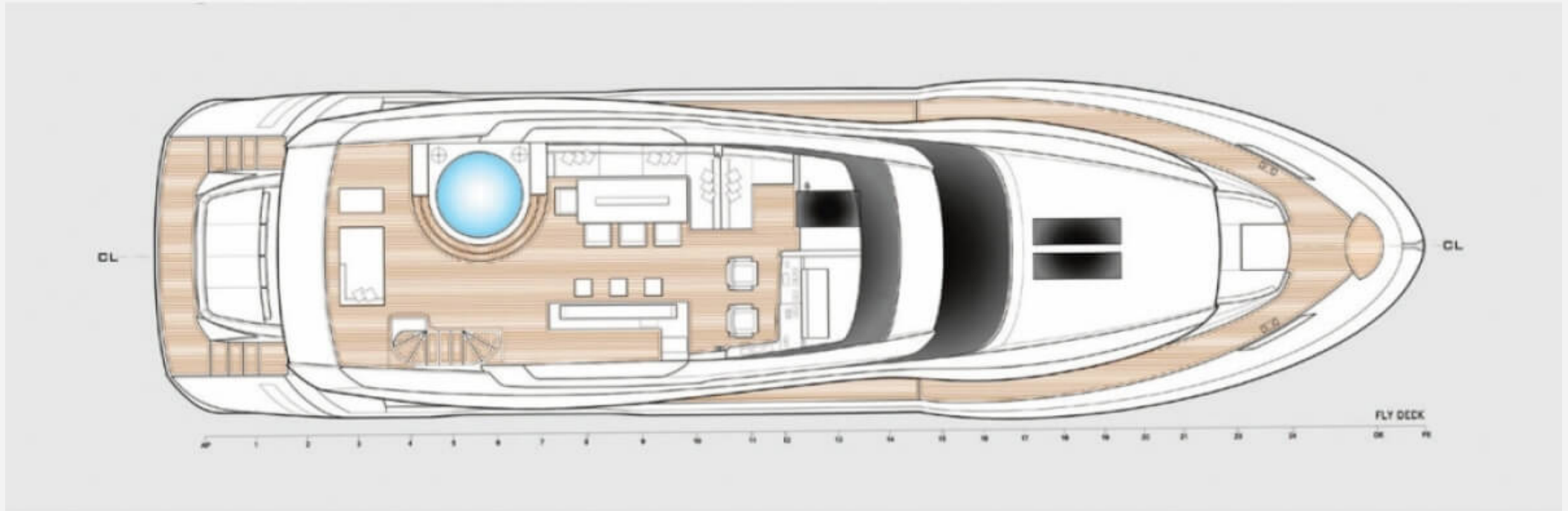




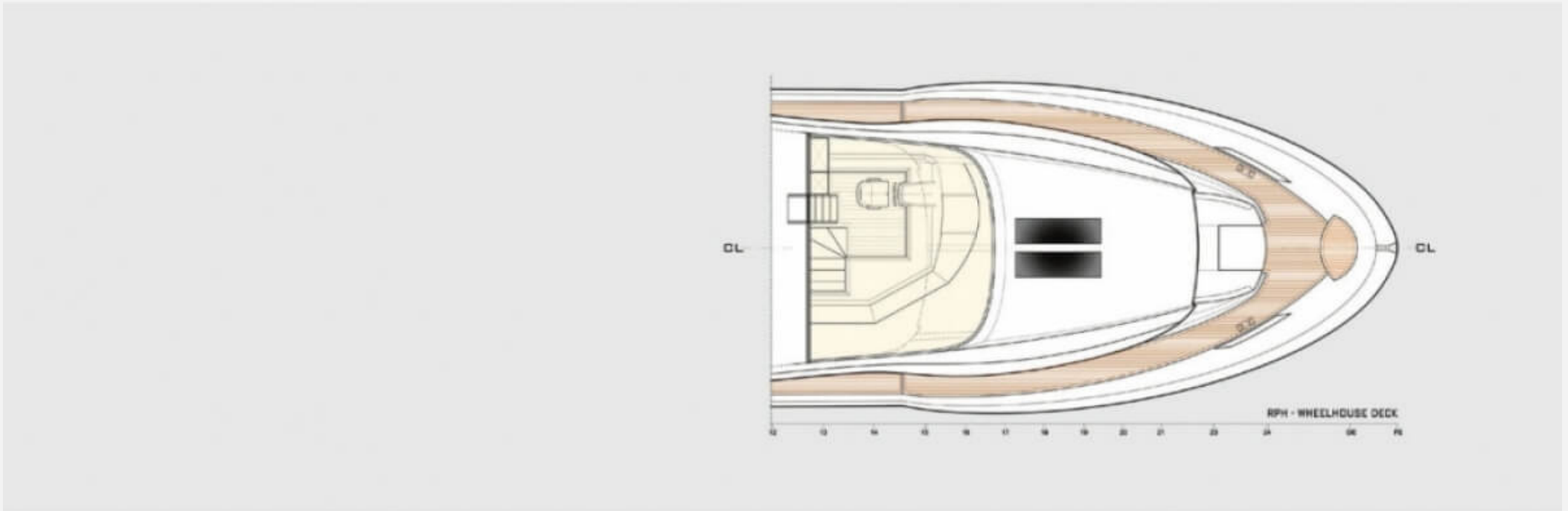


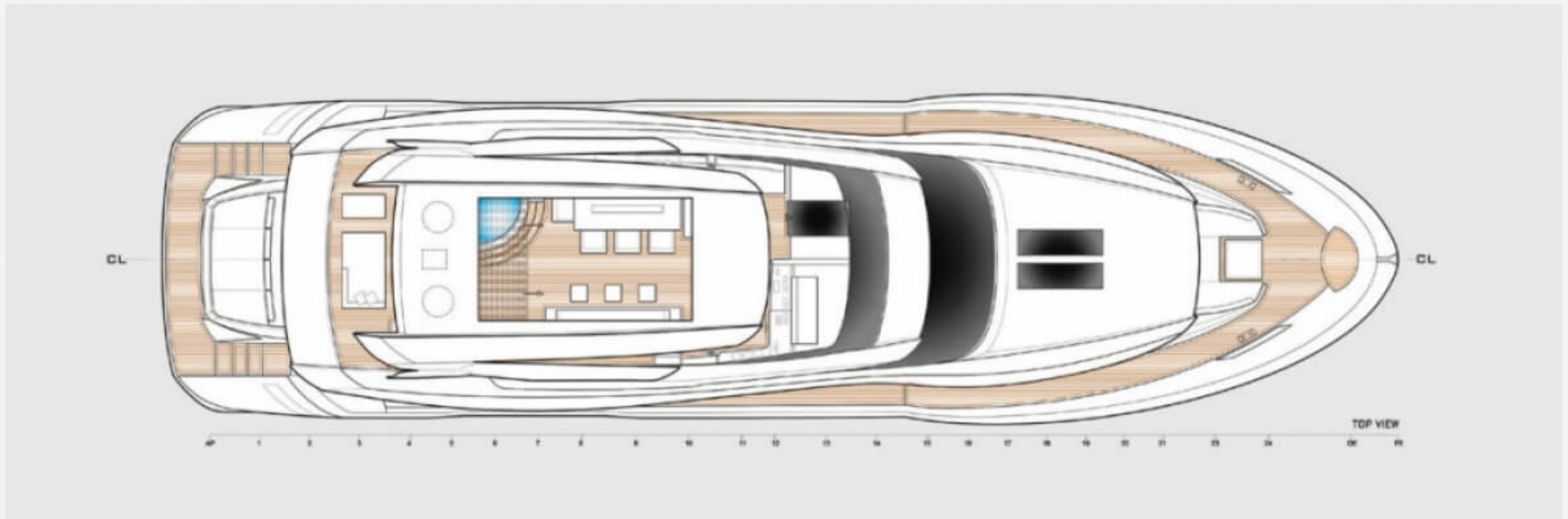
26.30 M / 86'29"



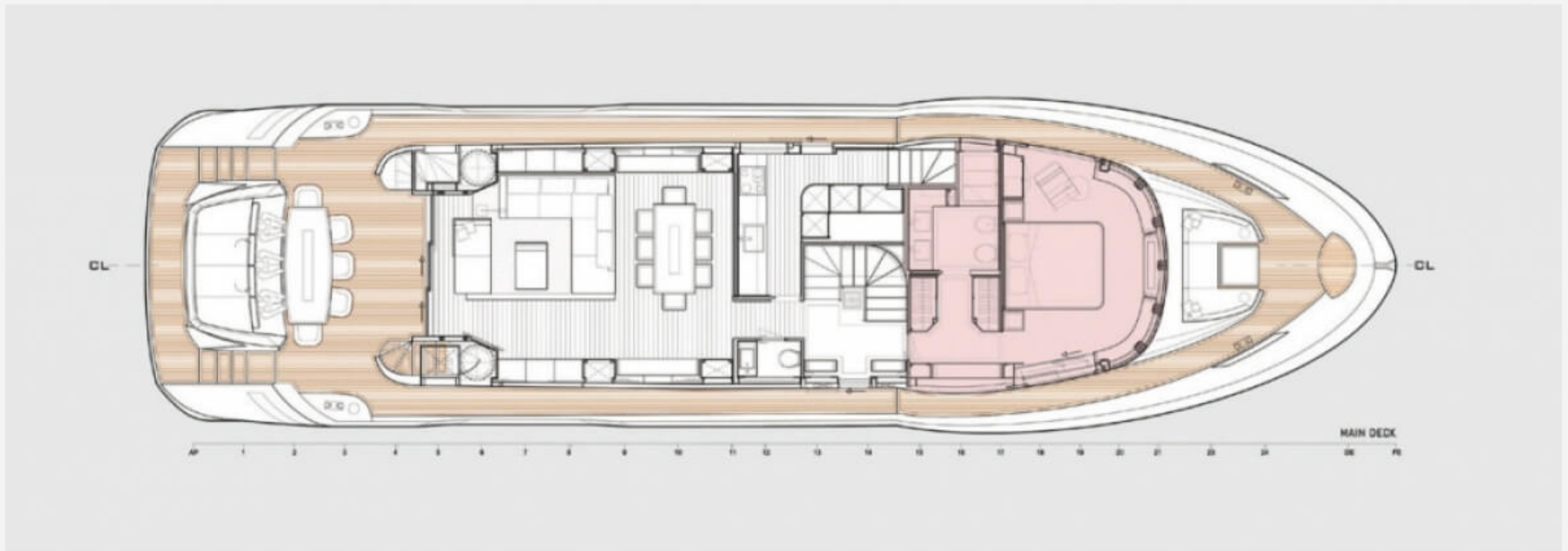


26.30 M / 86'29"





26.30 M / 86'29"



26.30 M / 86'29"

