

18.91 M / 62'3"



CARACTÉRISTIQUES PRINCIPALES

Builder**Built Year**

2023

Length

18.91 M / 62'3"

Beam

4.85 M / 15'91"

Draft

1.31 M / 4'29"

Registry

France

1,590,000 EUR 1,875,211 USD*

* Conversion approximative

🏠 Adresse:

3 Rue de la Loge L-1945 Luxembourg

📞 Contact

Thomas Peltier • P: +352.27.40.99.90 • M: +352.621.326.323

✉ E-mail:

t.peltier@seastemia.com

18.91 M / 62'3"

SPÉCIFICATIONS

DÉTAILS DU BATEAU

Main Category	Trawler	Boat Status	Brokerage
Built Year	2023	Registry	France

CERTIFICATION

Category	B
-----------------	---

BUILDER / DESIGNER

Builder		Model	X60
Hull Type	Semi Displacement		

DIMENSIONS

Length	18.91 M / 62'3"	Beam	4.85 M / 15'91"
Draft	1.31 M / 4'29"		

18.91 M / 62'3"

MACHINERY

Engine Maker	Cummins	Propulsion Mode	Diesel
Engine(s) type	Inboard	Engine(s) power	441.60 hp
Heures moteur 1	509.00 H.	Heures moteur 2	503.00 H.
Main Generator Hours	1,455.00 H.	Stabilizer Type	Gyroscopic
Stabilizer Maker	Seakeeper		

PERFORMANCES

Cruising Speed	18.00 noeuds	Max Speed	23.00 noeuds
-----------------------	--------------	------------------	--------------

TANKAGES

Fuel	2,200.00 litres / 580.80 US gals	Water	760.00 litres / 200.64 US gals
Black Water	170.00 litres / 44.88 US gals		

ACCOMODATIONS

Sleeps	6 guests	Couchette	2 simple, 1 double
Bathroom	3		1

18.91 M / 62'3"



18.91 M / 62'3"



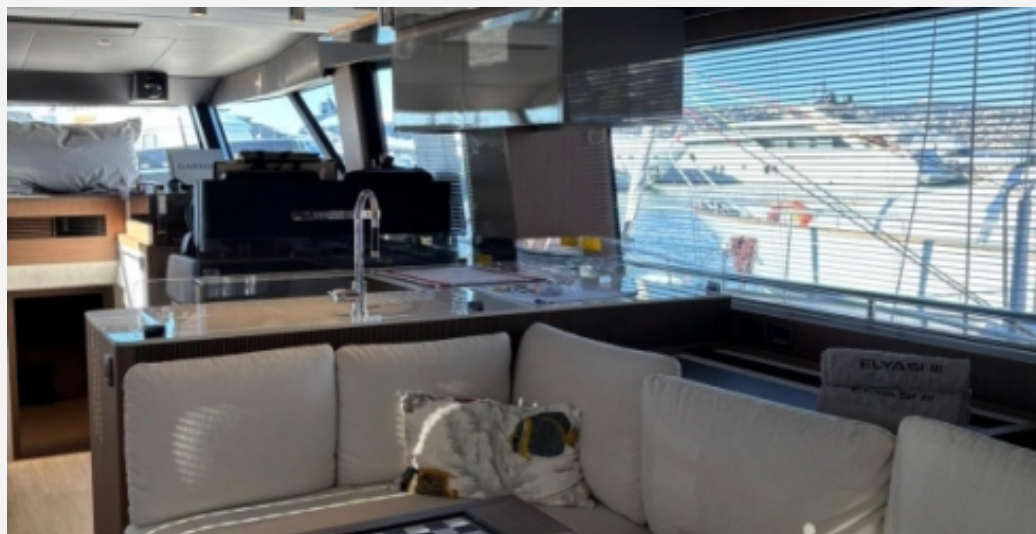
18.91 M / 62'3"



18.91 M / 62'3"



18.91 M / 62'3"



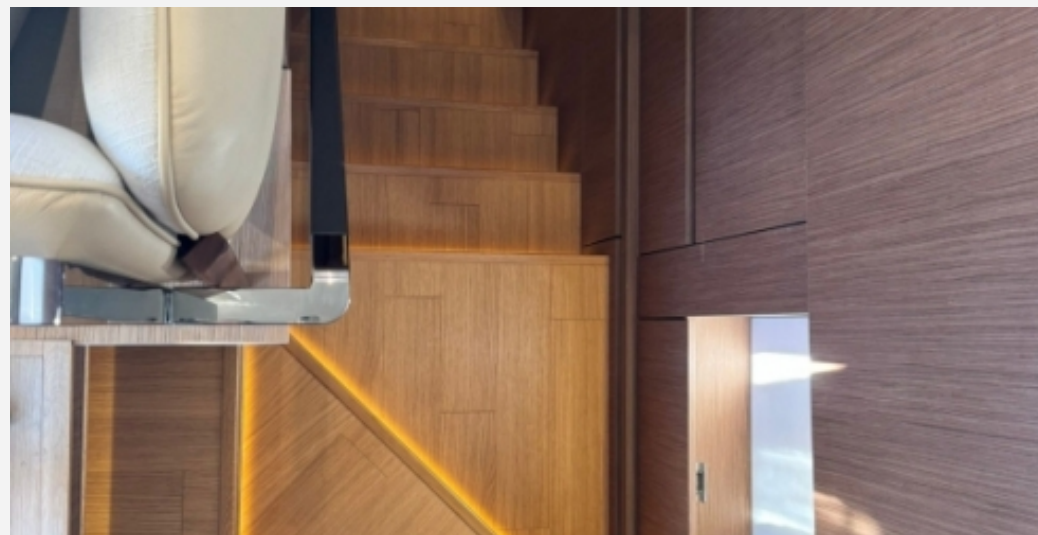
18.91 M / 62'3"



18.91 M / 62'3"



18.91 M / 62'3"



18.91 M / 62'3"



18.91 M / 62'3"

